

Series **82U50-3** Product Overview

Pallet power clamps, enclosed model

Application:

Clamping, holding, gripping and positioning of metal sheets and other parts, mainly in jigs and handling systems, particularly in situations where local accessibility does not allow the use of standard clamps.



82U50-300....
Pallet power clamp

Key areas of application:

Automotive manufacturing, sheet processing industry, jig and general mechanical engineering.

Features:

- Compact, enclosed aluminium body
- High holding torques
- Long life cycle
- Hard alloy rest at the clamping hook
- Toggle action mechanism
- Inductive sensing module with LED display
- Shielded design cover protects against welding spray

Optional:

- Adapter plate for lateral connection
- Sensing system integrated or attached to the cylinder

Model with inductive sensing			Max. holding force N [lbs]	Clamping force at 5 bar N [lbs]	Max. operating- pressure bar [psi]	Cylinder Ø mm [in]	Weight ~ kg [lbs]
Connector M12x1	Connector M12x1, with lead	Connector M8x1					
82U50-300B700	82U50-300B800	82U50-300C800	4000 [899]	4000 [899]	6 [87]	50 [1.97]	3,2 [7.04]

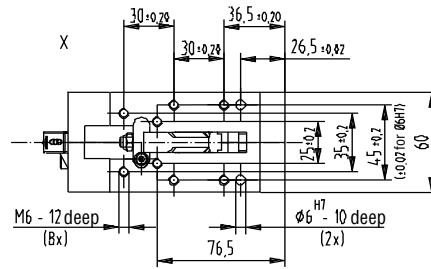
Accessories

Specification		Order no. for structural component 82U50-300....	Comment
Connecting cable (1 connector socket & 5 m cable)			
B7 / B8 sensing system			
Connector socket M12x1, straight, 5-pin		8EL-002-1	
Connector socket M12x1, angular, 4-pin		8EL-003-1	
C8 sensing system			
Connector socket M8x1, straight, 4-pin		8EL-009-1	
Connector socket M8x1, angular, 4-pin		8EL-007-1	
Plug adapter M8 to M12		8EL-008-1	
Sensing system attached to cylinder		8EA-025-1	2 pcs required
Magnetic sensors plus installation material			

Major spare parts

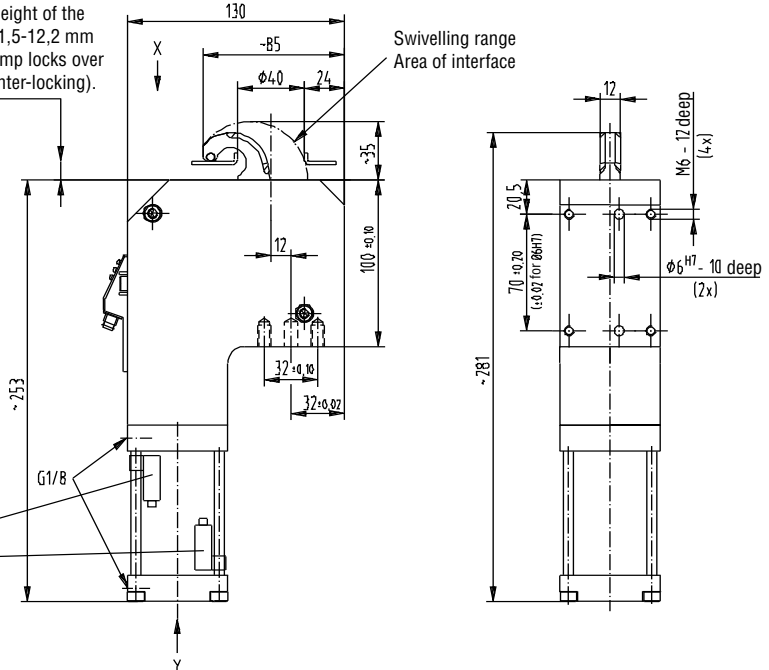
Specification	Order no. for structural component 82U50-300....
Pneumatic cylinder	8PW-007-1
Seal kit	8PW-007-1-00
Sensor box "B7" , connector plug M12x1	8EA-060-1
Sensor box "B8" , connector plug M12x1 with lead	8EA-031-1
Sensor box "C8" , connector plug M8x1	8EA-023-2
Spare part kit: Bushings, Bearings, pins	8KB-047-1

Series 82U50-3 Standard Clamp Dimensions



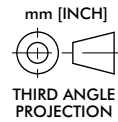
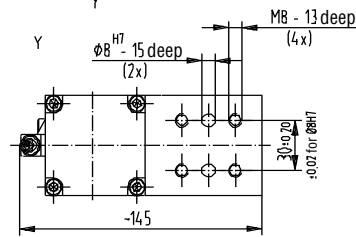
At a clamping height of the Workpiece of 11,5-12,2 mm by 5 bar the clamp locks over center (over-center-locking).

Swivelling range Area of interface

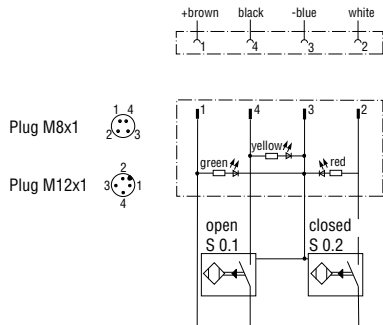


The clamping element is also prepared for a magnetic position control system (cylinder has a magnetic piston). The sensors including the assembly accessories can be ordered separately under the order no. 8EA-025-1 (2 pieces necessary).

Medium: air, max. 6 bar, operation with oil-free air is permissible



Power clamp to be operated with external pneumatic one-way flow control valve only



Wiring diagram of electrical sensing systems B7, C8, B8

Sensing system immune to interference from d.c. arc welding and a.c. arc welding

- B7: inductive, sensor box, connector plug M12x1
- B8: inductive, sensor box, connector plug M12x1 with lead
- C8: inductive, sensor box, connector plug M8x1